



Teaching
Excellence
Framework



UNIVERSITY OF
WOLVERHAMPTON



International Guide 2020/21

Contents

- 03 Welcome
- 04 Why choose Wolverhampton?
- 05 Things to do in Wolverhampton
- 06 Explore the UK
- 08 Our heritage
- 10 Learning facilities
- 12 Our campuses
- 14 Our faculties
- 16 Our faculties: Faculty of Arts, Business and Social Sciences
- 18 Our faculties: Faculty of Education, Health and Wellbeing
- 20 Our faculties: Faculty of Science and Engineering
- 22 Join our community
- 24 International Academy
- 28 Transnational Education (TNE)
- 29 Alumni
- 30 Help, guidance and support
- 31 Accommodation
- 32 Fees and finance
- 33 Money matters
- 34 Checklist
- 36 How to apply
- 38 Undergraduate and postgraduate courses



▼ Students in Wolverhampton city centre

City Campus Wolverhampton ▲

Welcome to the University of Wolverhampton

The University of Wolverhampton is a global university. From our central UK location, we provide opportunities to our students from home or abroad, in the UK and in countries around the world.

We help our students to develop the knowledge, skills and confidence to thrive in the global economy.

Each year we welcome students from over 100 nations, who join us to study at one of our UK campuses or partner institutions overseas.

Wherever you're studying with us, we put you – our students – first. We aim to give you the best possible student experience, as well as improving your overall life chances and employability, and are very proud of our 96% graduate employability rate*.

We hope you find this guide useful. Many of your questions will be answered within these pages, but please get in touch with us if you'd like to find out more.

I look forward to welcoming you to the University of Wolverhampton.

Geoff Layer
Vice-Chancellor

*Destinations of Leavers from Higher Education report, Class of 2017.



▼ Wolverhampton Bus Station



Queen Square ▲

Wolverhampton Art Gallery ▼



Why choose the University of Wolverhampton?

We're committed to making your student experience worthwhile – wherever in the world you might be studying.

We continue to expand our global reach, working with institutions around the world to deliver a wide range of courses. Many are internationally-recognised and accredited by professional bodies. Here are some other reasons why you should study with us.



University of Wolverhampton has been awarded 4 Stars overall.



TEF silver rating

We were awarded a Silver award as part of the Teaching Excellence Framework assessment in 2018.*



Long and successful history

We've been providing opportunity and academic excellence for over 190 years.



We're commended!

We've been awarded a commendation – the highest accolade – in our most recent assessment by the Quality Assurance Agency.



Low cost of living

Make your money go further compared to other cities in the UK*.



Great transport links

Travel the UK easily thanks to our central location.



96% graduate employability

Our students get jobs!**



Biggest ever investment!

Our 5-year, £250 million investment plan is improving student life in many ways, from course content to computers.



World-leading research#

Our research has impact on your studies, and on real life.

* This award recognises that the University delivers provision that is of high quality and consistently exceeds the rigorous national quality requirements for UK higher education with most students achieving excellent outcomes.

^numbeo.com

**Destinations of Leavers from Higher Education, Class of 2017.

#All of our Research Centres submitted in the most recent Research Excellence Framework exercise had world-leading elements.

Things to do in Wolverhampton

Right in the heart of the UK, we've got plenty to shout about in Wolverhampton. Whether you're studying at our city centre campus or in nearby Walsall or Telford, there's so much to do and to explore.



▲ Wolverhampton high street

▲ Zuri Coffee



▼ Wolverhampton Wanderers FC Stadium

▲ City Centre at night

▲ Arena Theatre

▼ Canal





Cardiff, Wales ▼

Beach in Barmouth, Wales ▲

▲ Blackpool Illuminations

▲ Ironbridge, Shropshire

London Eye, River Thames ▼



London City Centre ▲

▼ Bullring Shopping Centre, Birmingham

Bristol ▼

Explore the UK

Studying in the UK will allow you to embrace a unique and rich culture. You'll be immersed in a different lifestyle from what you have in your home country. The UK is full of attractions, you wouldn't want to miss the opportunity of visiting them while you're here. There won't be a dull moment while you're studying in the UK – that's for sure.



Our heritage

We're proud of a history that goes all the way back to 1827 – over 190 years, we've grown and changed as an institution to become the global university we are today.

The early years (1827-1899)

The roots of the University lie in the 19th century growth of Mechanics Institutes, which provided vocational and general education for working men. Following its formation in 1827, the institution grew and strengthened in the decades that followed, influenced heavily by the Industrial Revolution.

Early 20th century (1900-1944)

An educational foundation had firmly been established with the Wolverhampton Technical College and the Wolverhampton College of Art. In 1932, the foundation stone of our Wulfruna Building was laid by HRH Prince George forming the base for the University's presence in Wolverhampton city centre to the present day.

The post-war years (1945-1968)

The post-war rise in education led to a growing demand for more subject areas. By 1966, with around 7,000 students, the College began to provide Bachelor's degrees in English, Geography, History, Music, Economics and Computer Technology.

Wolverhampton Polytechnic (1969-1991)

On 1 September 1969, the College was officially designated a Polytechnic. The 1970s saw Wolverhampton develop into a truly international community with students from Iran, Malaysia, and Nigeria. Our growth continued with more courses offered internationally than ever before.

The University of Wolverhampton (1992-Present)

In 1992, Wolverhampton Polytechnic was granted university status and became the University of Wolverhampton. Today, we continue to invest in our students, staff, alumni and in the local and international community with over 4,000 students graduating each year.



▲ Wolverhampton City Campus pre-Ambika Paul Building

▼ Wolverhampton Polytechnic Library



▲ Wulfruna Building



▼ The changing pace of technology

▼ Lord Swraj Paul Building

▼ Information searching on microfiche



Learning facilities

Architecture and built environment

Gain hands-on practical learning with a prototyping laboratory, design studio, drawing offices and virtual reality suite.

Art

The iconic George Wallis Building, home to our School of Art, features nine floors of specialist equipment, studios and workshops to help you develop your craft.

Business

Our multi-million pound Lord Swraj Paul Building houses an executive education suite, IT suite, consulting rooms and more.

Computing and IT

Computing students will find dedicated facilities in the Alan Turing Building for games testing, development and research.

Engineering

We've invested in engineering courses, facilities and equipment at Telford Campus.

IT facilities

There are over 3,700 PCs across campus for you to use, as well as specialist Mac suites.

LaTTE room

The LaTTE room provides a flexible learning and teaching environment, facilitating individual and group work with a focus on technology and accessibility.

Law

Practise the art of litigation in our purpose-built mock court room, complete with judges' bench and witness box.

Libraries

Our libraries combine traditional services with high-tech facilities, providing access to materials to aid you in your studies.

Media

Our purpose-built media suite includes cutting-edge TV and radio studios and a sound-booth with full recording capabilities.

Nursing and midwifery

Our mock hospital wards offer hands-on teaching for students, allowing you to practise safely on our SimMen.

Performing arts

Our Performance Hub has prestigious All-Steinway School status and is fully equipped with specialist facilities including dance, drama, music and recording studios.

Psychology

Our innovative Social Psychology Suite comes complete with one-way mirror, viewing chamber and video cameras.

Science

The superbly equipped Rosalind Franklin Building's six-storeys provide purpose-built laboratories for all branches of science.

Sports Centre

As well as sports facilities, including a new 3G pitch, Walsall Campus is home to sports labs and a state-of-the-art DXA suite for sport, exercise and health-related research, including bone density testing.



▲ Harrison Library

Mock court room ▲



▲ Learning space



▲ Walsall football pitch



Mac labs ▲



▲ Engineering facilities



▲ Rosalind Franklin Building labs

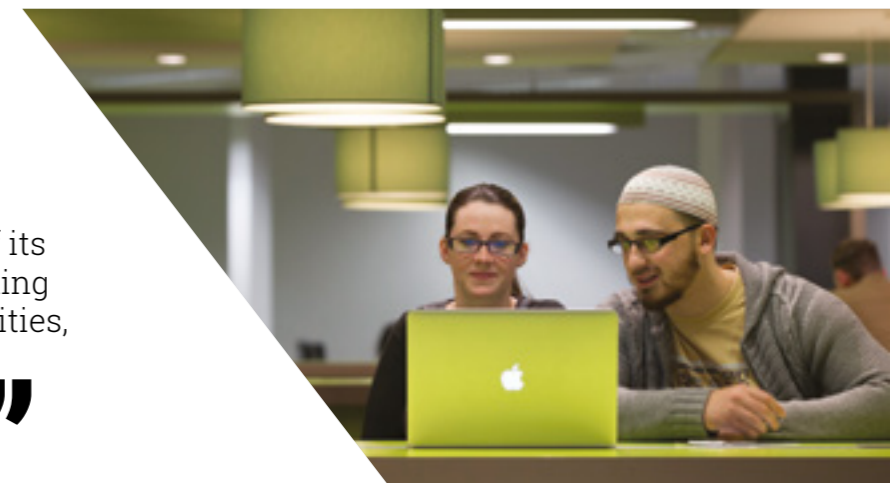


Mock hospital ward ▲



I chose Wolverhampton because of its academic quality, innovative teaching methods, excellent university facilities, qualified teachers and exceptional preparation focused on research. ”

Carmen Iris Sanchez Montesino
Dominican Republic
MSc Biomedical Science



Harrison Library ▲

Our campuses

Whichever of our three main campuses you're based at, you'll feel right at home in an inspiring environment.

Wolverhampton

With a history going back to the early 19th century, City Campus is right in the centre of Wolverhampton.

The campus has changed the landscape of the city. Historic buildings include the Wulfruna and George Wallis buildings, home to the Wolverhampton School of Art (est. 1851). More recent multi-million pound developments include the Rosalind Franklin Building and the new home of our Business School, the Lord Swraj Paul Building.

Cutting-edge facilities are available, whatever your choice of subject. With accommodation options to suit every budget, you'll be just minutes away from everything you need.

Walsall

If your course is taught at our Walsall Campus, you'll find on-site accommodation and specialist facilities for performing arts, education, health and sport subjects.

Extensive sports facilities include a new 3G artificial grass pitch, Sports Centre and swimming pool.

You'll be just 10 minutes from Walsall town centre and a short distance away from Wolverhampton too. Don't forget you can hop on the **FREE** shuttle bus to Wolverhampton City Campus!

Telford

Telford Campus is home-away-from-home for many of our international students, and where you'll find some of our most exciting developments happening.

The International Academy at Priorslee Hall is based at the picturesque, countryside campus. Support is available at every level for students who need help in improving their English language proficiency.

We've also recently invested £10 million at Telford in advanced new engineering facilities and equipment in a number of specialist areas, including motorsport engineering.



▲ Performance Hub, Walsall Campus

Telford Campus ▲



▲ Courtyard, City Campus

George Wallis Building, City Campus ▼



▼ Lord Swraj Paul Building, City Campus

Ambika Paul Building, City Campus ▲



University Shuttle Bus

Need to get from one campus to another? Show your student ID to board our **FREE** inter-campus shuttle bus service during term-time. Find out more at: wlv.ac.uk/bus



Our faculties

At the University of Wolverhampton, your course will be delivered by one of our Schools or Institutes, which are grouped together in three faculties.

- Faculty of **Arts, Business and Social Sciences**
- Faculty of **Education, Health and Wellbeing**
- Faculty of **Science and Engineering**



Faculty of Arts, Business and Social Sciences

Offering a wide range of undergraduate and postgraduate courses, the Faculty's teaching excellence, innovative learning materials and first-class facilities create a vibrant and stimulating learning environment, allowing you to develop personally and professionally.

Wolverhampton School of Art (Est.1851)
The School of Art builds on a long-standing history of design and media excellence, with courses shaped by the contemporary creative industries. The School offers the expertise and facilities to help you explore stories and develop your individual style as an artist, designer or maker.

University of Wolverhampton Business School
Our Business School has a distinguished history of supporting business in the area. We were among the first in the country to offer MBA programmes, coaching and mentoring qualifications and have a tradition of innovation in developing courses which meet the needs of business.

School of Humanities
Broaden your intellectual horizons and critically engage with ideas to develop your understanding of an increasingly complex global world. Stimulating courses are enriched by the research and scholarship of our academic staff.

University of Wolverhampton Law School
The Law School has over 30 years' experience of providing legal education to the highest standard, reflecting the latest legal developments. Our expertise is respected and highly valued by important players in the legal sector.

School of Performing Arts
Explore your performance potential. The School of Performing Arts offers the perfect environment and state-of-the-art facilities for you to realise your ambitions and develop your craft.

School of Social, Historical and Political Studies
The School has highly qualified and committed staff teaching a broad range of subjects in sociology, social policy, criminology, history, war studies and politics. The Faculty also includes the Centre for International Development and Training, Centre for African Entrepreneurship and Leadership, and the International Academy.



“
By getting involved in different activities and roles, I have made friends from all over the world.”

**Wai Lok
Hong Kong**
LLB (Hons) Law



Faculty of Education, Health and Wellbeing

The Faculty brings together four Institutes specialising in subject areas headed up by academic staff who are experts in their fields, with many courses accredited by recognised professional bodies. The Faculty's outstanding facilities include the multi-million pound Sports Centre and advanced, purpose-built healthcare and teacher training buildings.

Institute of Community and Society

Our students benefit from extensive staff experience in healthcare at clinical, managerial and research levels. Research and development are viewed as an integral part of the Institute's activities, underpinning learning and teaching within all subject areas.

Institute of Education

Offering a comprehensive range of nationally-recognised courses in education for future and current education professionals.

Institute of Health

We have a range of courses including degrees with an integrated foundation year option. Our subjects including Nursing, Community Health, Midwifery, Paramedic Science, Physiotherapy and Physician Associate.

Institute of Human Sciences

Multi-million pound facilities, excellent links with industry, renowned and dynamic staff, interesting and challenging courses, and accreditation from the British Psychological Society add up to an excellent foundation for a wide range of careers.



Faculty of Science and Engineering

With a rich and long history of technology, teaching and local skills provision, the Faculty of Science and Engineering is committed to growing its base in science, technology, engineering and mathematics (STEM) and works closely with leading companies such as Morgan, Jaguar Land Rover, Moog and UTC Aerospace Systems.

School of Architecture and Built Environment

Learn from industry experts who transfer their knowledge and hands-on experience in their respective fields. Courses are approved by multiple accreditors, ensuring that your learning is practical and relevant to current industry practice.

School of Engineering

Our engineering degree courses have been developed in close consultation with industry practitioners so that you have the up-to-date technical knowledge and design flair to work in today's ever changing industry.

School of Mathematics and Computer Science

Mathematics and Computer Science are disciplines central to almost everything we do, from everyday finance to scientific discovery. Degree courses are accredited and excellent specialist facilities have been developed for our students.

School of Pharmacy

Studying Pharmacy, Pharmaceutical Science or Pharmacology will offer you an exciting and versatile learning experience leading to a prestigious and rewarding career path with many diverse opportunities.

School of Sciences

Learn to understand how the human body functions and help to determine the impact biology, chemistry and forensic science will have in our future. Your science degree will give you a head-start in securing a rewarding career.



Join our community

Meet people from all over the world and enjoy new experiences at Wolverhampton.

Throughout the year, our calendar of on-site events brings students, staff and the wider community together. City Campus Courtyard plays host to a number of events including family fun days, food fairs, Christmas in the Courtyard and our Students' Summer Party.

Our thriving international student body enriches our campuses and adds further flavour to our multi-cultural city. Our annual International Fair showcases the breadth of cultural influences at the University with food, music and dance.

If you follow a faith or want to explore your spirituality, the city centre's square mile offers churches, mosques, gurdwaras and temples.



Student representatives from Oman ▲



▲ International Fair



Wolverhampton Central Mosque ▲



▼ Dancers enjoying Courtyard celebrations

▼ Students' and Staff Summer Party

International Fair ▲



▲ Walsall Students' Union

▼ In The City Day, Mander Shopping Centre





International Academy

Our International Academy is a home-from-home for international students – offering you help and support to achieve your aims.

Based in the 18th century Priorslee Hall at our Telford Campus, our friendly and nurturing community welcomes students from all over the world.

All teaching at the University is carried out in English, so you must have a required proficiency in the language. We'll help you reach the specific standard required to progress on to a full degree course.

Our courses are accredited by the British Council for the teaching of English in the UK and delivered by highly experienced, qualified and friendly staff, and include:

- Pre-sessional English courses to support you with your English before starting your degree course
- International Foundation Year courses
- International Business Communication (top-up) degree
- Pre-Master's courses for students who need to bridge the gap between their previous qualifications/ experience and postgraduate study
- Language development and communication courses for existing University students, both in foreign languages and English as a Foreign Language
- IELTS Preparation
- OET Preparation (Occupational English Test).

Finding the right course for you

Your course with the International Academy will be based on the qualifications you have, your current standard of English, and your future academic plans.

Which of the following best describes your requirements?

I have the academic qualifications for my course. + I have the English language requirements for my course.



Direct entry to a University degree. Apply today!

I have the academic qualifications for my course. **But** don't have the English language requirements for my course.



Apply now for a Pre-sessional English course.

I don't have the academic qualifications for my course. + I have some English language.



Depending on your level of English, apply now for Pre-sessional English / International Foundation Year/ Pre-Master's.

I just want to improve my English language skills and gain experience.



Apply now for a Summer or Winter School or Study Semester Abroad Scholarship Programme (UK).

Intensive English Pre-sessional preparation courses

Students are required to hold an IELTS score of 6.0 overall with 5.5 in each component in order to enter our undergraduate and postgraduate programmes directly.

However, if you don't hold this score, don't worry. One of our intensive English courses will help you meet the requirements.

On your course, you will develop your English language skills, with further practice in academic reading, writing, listening and speaking to enable you to reach the English language level required for entry to the University of Wolverhampton. The course also introduces you to the learning context in the UK and to the academic skills necessary for study in higher education.

Level on entry	Course (Duration)	Cost
IELTS 4.0	Pre-sessional English and Academic Skills: 22 weeks (4.0 entry)	£5,610
	*PLUS programme: 22 weeks	£6,130
IELTS 4.5	Pre-sessional English and Academic Skills: 17 weeks (4.5 entry)	£3,570
	*PLUS programme: 18 weeks	£4,090
IELTS 5.0	Pre-sessional English and Academic Skills 11 weeks (5.0 entry)	£2,395
	PLUS programme: 12 weeks	£2,915
IELTS 5.5	Pre-sessional English and Academic Skills : 6 weeks (5.5 entry)	£1,190
	*PLUS programme: 7 weeks	£1,710
IELTS 5.5	International Foundation Year	£8,840
	Study Semester Abroad Scholarship Programme (UK)	£3,380
	Pre-Master's (2 semesters)	£8,670
IELTS 6.0	Pre-Master's (1 semester)	£4,335

*Pre-sessional PLUS programmes give extra intensive tuition for students requiring a 6.5 to enter onto their degree programme. At the end of the course, you can take our internal test (Wolverhampton English Proficiency Exam) to gain the higher grade.

Please note that the information supplied is correct at the time of print.

Fees are for the current academic year only. Any subsequent years may be subject to an annual increase, usually in line with inflation.

For more information on the International Academy, visit: wlv.ac.uk/ia



I studied English in the UK and decided to do my Master's here. I chose Wolverhampton for its city location and course options.



Abdulaziz Al Jumaia
Saudi Arabia
MA Language and Information Processing



Transnational Education

Our international partnerships mean you can study a University of Wolverhampton degree outside of the UK.

The University works with an extensive network of transnational education (TNE) partners around the world that either:

- deliver University of Wolverhampton courses in country
- or offer courses which are accredited by the University.

We've been working successfully with international teaching organisations around the world for a number of years, providing partner institutions with further and higher education including:

- preparatory courses
- undergraduate and postgraduate taught programmes
- research and professional development programmes
- consultancy.

The University has over 20 TNE partners based in 13 countries, offering a variety of courses across our three faculties.

Find out more about TNE opportunities at: wlv.ac.uk/tne



I am a proud alumnus of the University of Wolverhampton from Podar, Mumbai. My goal is to open my own college of music in India, this would all be impossible without the impetus from the BABM degree, where I basically learnt the A-Z of Business Management.



Tizaan Alphonso
Podar International College
BA (Hons) Business Management



Our Transnational Education Partners

China	Hubei Engineering University Yunnan Agricultural University	Malaysia	International College of Music (ICOM)
France	Ecole Supérieure Des Technologies Industrielles Avancées	Myanmar	Victoria University College
Greece	Mediterranean College	Nepal	Herald College Merryland College
Hong Kong	City University of Hong Kong HKU SPACE - School of Professional and Continuing Education	Oman	Middle East College
Ireland	Coláiste Dhúlaigh College of Further Education	Singapore	ERC Institute Auston Institute of Management
India	Westford School of Management Podar World College Rustomjee Academy for Global Careers	Sri Lanka	British College of Applied Studies (BCAS) Columbo International Nautical and Engineering College (CINEC)
		UAE	Cornerstone College of International Studies Westford School of Management

WLV Alumni Association

As a graduate of the University of Wolverhampton, you are automatically a member of our WLV Alumni Association: a global network of over 130,000 graduates in more than 130 countries.

We are always on hand to offer you a lifelong source of support that will help you achieve your personal and professional aspirations.

Our aim is to create a mutually beneficial relationship with our graduates. As part of our University-wide WLV Alumni Association, we have set up overseas associations to help you reconnect with us and your fellow alumni, no matter where you are in the world.

Find out more about our international alumni associations: wlv.ac.uk/alumni

20%
DISCOUNTS!

The University offers a generous 20% loyalty discount to students progressing from an undergraduate programme to selected postgraduate programmes*.

* where both courses are University of Wolverhampton awards.

Help, guidance and support

As an international student adapting to life in a new country, you might need some extra support from time to time. We offer a range of professional Student Support and Wellbeing services that are here for you when you need them.

The Gateway

Get friendly and professional advice on courses, entry requirements, fees and finance and more from our Education Guidance Advisors at The Gateway. Find out more at: wlv.ac.uk/gateway

Student Centre

Your Student Centre can help with the administration and organisation of your time at University, from enrolment to graduation. We also offer information for current international students, including visa and immigration advice. Find out more at: wlv.ac.uk/studentcentre

Counselling Service

Our fully qualified and experienced counsellors can listen to personal or academic concerns and offer support and help in a non-judgemental way. Find out more at: wlv.ac.uk/counselling

Students' Union

The Students' Union offers independent advice and support for all students, as well as social events and activities. Discover more at: wolvesunion.org

Chaplaincy

The Chaplaincy offers a welcoming environment and space to reflect, whether you follow a religion or not. It can help put you in touch with representatives of your religion. Find out more at: wlv.ac.uk/chaplaincy

Student Support and Wellbeing (SSW)

SSW provides services and support for students with sensory, physical or specific learning difficulties. Find out more at: wlv.ac.uk/ssw

Careers, Enterprise and the Workplace

Our Careers teams offer a wide range of services and resources to help you gain employability skills and work experience. Find out more about the opportunities available at: wlv.ac.uk/careers

Libraries

Libraries are open seven-days-a-week and provide a vibrant blend of traditional services with the latest learning resource technologies, wireless access, modern study facilities, and self-service options. Find out more at: wlv.ac.uk/lib



The University of Wolverhampton has friendly and helpful staff who will make you feel at home. The University offers a variety of courses which will suit your career choice and staff can recommend alternative courses if you don't find the one you want. It is located right in the heart of the city close to all amenities.

Tshidzani Pongo Zimbabwe

MA Social Work
BA (Hon) Social Care/Social Policy Social
Work Practice Education



Accommodation

We have over 1,000 places available in University-owned accommodation, so settle in and make yourself at home.

You can apply for your University accommodation as soon as you have confirmed a place on your course.

Fill in a group application to live with friends, request a single-sex or quiet corridor, or apply for a specially adapted room if you have a disability.

As well as your own room, you'll have access to a shared kitchen which is well-equipped with appliances including:

- microwave
- cooker
- fridge-freezer
- kettle
- lockable cupboards.

In our en-suite accommodation there's also a TV and sofa area, plus on-site laundries.

For your safety, there is 24-hour security, CCTV on every campus, and rooms fitted with smoke alarms and secure locks.

What's included in your rent?

University accommodation offers great value for money. Your rent includes:

- 24-hour security and caretaking service
- all utilities: heating, gas, electricity
- basic contents insurance
- wireless or plug-in internet access in your room and communal areas.



You instantly feel at home, it feels like a family.

**Fiona Snikiwe Mudzongo
Zimbabwe**
BA (Hons) Tourism
Management

Accommodation fees (for 2020-21 year)

Campus/ type of accommodation	Weekly cost	37-week license (cost for an academic year)
City: standard	£90	£3,330
City: en-suite	£108	£3,996
Walsall: standard	£90	£3,330
Walsall: en-suite	£108	£3,996
Telford: en-suite	£95	£3,515

Fees and finance

What you need to know

Your tuition fee varies according to your chosen course, your level of study, your chosen mode of study and whether you are eligible to pay European Union (EU) or international fees (which depends on your nationality and residency over the past three years).

To find out the cost of tuition fees for your chosen course, you can check the individual course page on our Course Finder: wlv.ac.uk/courses

The table below outlines how much tuition fees cost for courses starting in 2020/21.

Study level/ method	2020-21
Undergraduate full-time courses	£12,250
Postgraduate taught full-time courses	£13,650
Postgraduate full-time courses for Business School	From £13,650

Please note that the information supplied is correct at the time of print.

For more details, visit: wlv.ac.uk/international/fees



I chose the University of Wolverhampton because it was one of a few universities offering the course I wanted to study. It's been great to meet students from all over the world.

Ali Ahmad Khan
Pakistan

BEng (Hons) Civil and
Transportation Engineering

Money matters

We believe that the overall Wolverhampton experience offers excellent value for money and is a sensible investment in your future.

Cost of living in Wolverhampton is recognised as being good value compared to other cities in the UK, particularly London. According to numbeo.com consumer prices in Wolverhampton are 20% lower, eating out is 30% less expensive, and rents are up to 72.87% lower!

It's estimated that a single student living in Wolverhampton will need approximately £1,015 a month to meet basic living expenses such as accommodation costs, food, books and equipment, and other necessities. This is in line with the Home Office recommended figures for living outside London. **This figure is given as a guide only.**

Food costs: £30 - £35 (average cost of weekly shop purchasing supermarket's own brand).

Accommodation costs: £4,900 - £8,300 per year depending on the type of accommodation.

Other costs: To cover items such as books, clothing, entertainment, laundrette and dry-cleaning, personal hygiene items and household articles, you will need approximately £340 for the year.

The following example helps to illustrate the breakdown of costs.

Let's say your course fee is £12,000 and you've paid £3,000 in advance.

For living costs you'll need to show £9,135 (£1,015 x 9 months) but you've also paid £300 towards your University accommodation already.

So, for this example, the amount you'll need to show in your bank account is £17,835 – because
£9,000 + £9,135 - £300 = £17,835.



Checklist

The University will need the following information in order to make a decision on your application:

1 Statement of purpose:

Your statement of purpose must explain your reasons for choosing this University and course. This can include why you are applying, why you have chosen the programme, and how it is related to your future career ambitions.

2 English Language:

We require a certified English language test IELTS. In some instances, country specific English language exams can be accepted.

3 Reference:

All academic or employer references need to be submitted on institutional letterhead to be valid.

4 Deposit:

In order to secure your place on the programme and issue you with a confirmation of acceptance for studies (CAS), the University must receive payment from you. You can pay anything from the £3,000 deposit payment to the full tuition fee amount. Details of how to pay will be included in your offer letter.

5 Final certificate:

If you are still finishing your current studies, we need to receive your final transcripts and certificates. When you receive these documents, please forward copies to us.

6 TB certificate:

If you are spending more than six months in the UK, and you're from one of the countries listed at: [gov.uk/tb-test-visa](https://www.gov.uk/tb-test-visa), you'll need to take a tuberculosis (TB) test.

7 Passport:

A copy of the picture and data page of your passport.

8 Bank statement:

Before international students are issued a CAS to make a visa application, we need to see proof of funds have been maintained for 28 days. This means that you will need to send bank statements to show that you have saved all unpaid tuition fees and living expenses in your bank account for 28 days.

9 Parent's bank account:

If using your parent's/legal guardian's account, you need to show evidence that you are related to them and that you have permission to use their money. This is usually by showing an original birth certificate and a signed letter confirming your parents are willing to sponsor you and that you are their son or daughter. Please note, an affidavit cannot be used to prove someone is your parent or legal guardian.

Need help?

We advise you apply well in advance to allow plenty of time to arrange your visa, accommodation and deal with any other issues ahead of your studies. We can help.

For support and advice, contact our friendly team. Email: international@wlv.ac.uk or visit: [wlv.ac.uk/international/apply](https://www.wlv.ac.uk/international/apply)

How to apply: a 10-step guide

1

Apply

There are three easy ways to apply:

- **Direct to the University** – complete and submit an online application form. You need to include your personal statement and scans of your original academic transcripts and certificates. We submit your application to UCAS on your behalf.
- **Direct through UCAS** – if you're applying for an undergraduate degree or a Higher National Diploma (HND), you can apply directly through the UK's Universities and Colleges Admissions Service (UCAS) at: ucas.com
- **Through a country representative** – our in-country representatives can help you make your application and apply for a visa, and give advice on studying abroad.

2

Get your offer

Providing that you have submitted all the correct information, you will receive one of the following decisions by email:

- **Unconditional offer** – You meet the entry criteria. Your place will be reserved until you accept or decline your offer.
- **Conditional offer** – You still need to complete your current qualifications, or submit outstanding documents. Your place will be reserved until you meet the rest of the entry criteria.
- **Alternative course** – You do not meet the entry criteria for the course you applied for, but you are suitable for another course.
- **Reject** – You do not meet the entry criteria. We will always offer an alternative course where possible.

3

Meet your conditions

- If you are holding an unconditional offer, you have already met all of the conditions and you will be eligible to proceed to apply for your visa at the appropriate time.
- If you have a conditional offer, you will need to email your outstanding documents.
- If your offer is conditional on meeting the English language requirements, then you may want to consider a pre-sessional English course (see pages 24-26).

4

Accept your offer

If you're applying to us directly or through UCAS, log in to e:Vision or UCAS Track to accept your offer. If you're applying through an in-country representative, they'll do this for you.

5

Book your accommodation

Once you have accepted your offer (conditional or unconditional), you will receive an email inviting you to book accommodation online.

6

Request confirmation of acceptance for studies (CAS)

A CAS is an e-document and confirms that you have been accepted onto a full-time degree course at an educational sponsor in the UK. Once you have an unconditional offer and are within 3 months of the

course start date, you will be able to request your CAS at which point further checks will be undertaken to check eligibility for visa.

7

Arrange your finances and prepare your documents

You will need to arrange for the remainder of your fees (minus the deposit) and living costs to be in your, or your parent or legal guardian's, bank account for 28 consecutive days. You will also need to pay a healthcare surcharge, which is currently £300 per year of your course. You can find out more information and pay this charge online at: gov.uk. Depending on your

country of domicile, you may also need to arrange for a TB (tuberculosis) test to be carried out. Depending on the course you have applied for, you may need to apply for an Academic Technology Approval Scheme (ATAS) certificate. For more information, search for 'applying for a student visa' at: wlv.ac.uk

8

Visa and immigration

Once you've met the financial conditions and provided all relevant documents to the University, you will be issued with a CAS number and can then apply for your Tier 4 visa.

Depending on when you apply, you may need to use the visa priority service to ensure your application will be processed ahead of your arrival for Welcome Week.

If you have a conditional offer and do not meet visa conditions, a deposit refund can be requested subject to terms and conditions.

9

Credibility interview

You may be invited to attend a credibility interview with the Home Office.

10

Arrange your travel

Once you receive your visa, you can book your travel to the UK. See you in Wolverhampton!

Make sure you arrive in time for our International Welcome Week!

Need help?

We advise you apply well in advance to allow plenty of time to arrange your visa, accommodation and deal with any other issues ahead of your studies. We can help.

For support and advice, contact our friendly team. Email: international@wlv.ac.uk or visit: wlv.ac.uk/international/apply

Undergraduate and postgraduate courses

A–Z programme index by Faculty

Faculty of Arts, Business and Social Sciences

Wolverhampton School of Art – Undergraduate Courses

- Animation (BA) with Foundation Year option
- Computer Games Design (BA) with Foundation Year option
- Fashion (BA) with Foundation Year option
- Film and Television Production (BA) with Foundation Year option
- Fine Art (BA) with Foundation year option
- Furniture Design (BDes) with Foundation Year option
- Glass and Ceramics (BA) with Foundation Year option
- Graphic Design (BA) with Foundation Year option
- Illustration (BA) with Foundation Year option
- Interior Design (BDes) with Foundation Year option
- Media (BA) with Foundation Year / Joint options
- Multimedia Journalism (BA) with Foundation Year option
- Photography (BA) with Foundation Year option
- Product Design (BDes) with Foundation Year option
- Textiles and Surface Pattern (BA) with Foundation Year option

Wolverhampton School of Art – Postgraduate Courses

- Art & Design (MA by Research)
- Contemporary Media (MA)
- Design and Applied Arts (MA)
- Digital and Visual Communications (MA)
- Film and Screen (MA)
- Film and Television Production (MA)
- Fine Art (MA)
- Public Relations and Corporate Communications (MA)

School of Performing Arts – Undergraduate Courses

- Acting (BA)
- Dance (BA) with Joint options
- Dance Science and Performance (BA)
- Drama (BA) with Joint options
- Music (BMus)
- Music for Education & Community Practice (BA)
- Music Technology (BA) with Joint options
- Musical Theatre (BA) with Joint options
- Popular Music (BA) with Joint options

School of Performing Arts – Postgraduate Courses

- Audio Technology (MSc)
- Contemporary Theatre and Performance (MA)
- Dance (MA)
- Dance Science (MSc)
- Music (MMus)
- Music Technology (MSc by Research)
- Musical Theatre (MA)
- Performing Arts (MA by Research)

University of Wolverhampton Business School – Undergraduate Courses

- Accounting and Finance (BA) with Foundation Year option
- Business (HND)
- Business Management (BA) Foundation Year / Joint options
- Economics (BA) with Foundation Year / Joint options
- Event and Venue Management (BA) with Foundation Year option
- Human Resource Management (BA) with Foundation Year option
- International Business Management (BSc) with Foundation Year option
- International Hospitality Management (BA) with Foundation Year option
- Marketing and Events Management (BA) with Foundation Year option
- Marketing Management (BA) with Foundation Year option
- Tourism Management (BA) with Foundation Year / Joint options

University of Wolverhampton Business School – Postgraduate Courses

- Master of Business Administration (MBA)
- Master of Business Administration (International Development) (MBA)
- Finance and Accounting (MSc)
- Hospitality and Event Management (MA)
- Human Resource Management (MA)
- Innovation and Entrepreneurship (MSc)
- International Banking and Finance (MSc)
- International Business Management (MSc)
- International Master of Business Administration (MBA)
- Leadership and Management (MSc)
- Marketing Management (MSc)
- Professional Accounting and Finance (MSc)

School of Humanities – Undergraduate Courses

- Creative and Professional Writing (BA) with Foundation Year / Joint options
- English (BA) with Foundation Year / Joint options
- English Language and Linguistics (BA) with Foundation Year / Joint options
- Philosophy (BA) with Joint options
- Religious Studies (BA) with Joint options

School of Humanities - Postgraduate Courses

- Computational Linguistics (MA)
- English (MA)
- Humanities (MA by Research)
- Popular Culture (MA)
- Practical Linguistics for ELT, Lexicography and Translation (MA)
- Sikh Studies (MA)

University of Wolverhampton Law School – Undergraduate Courses

- Law (LLB) with Foundation Year option
- Law with Joint Awards with Foundation Year

University of Wolverhampton Law School – Postgraduate Courses

- LLM (Common Professional Examination) and by distance learning
- LLM International Corporate and Financial Law
- LLM (Law)
- LLM International Business Law
- LLM Legal Practice Course
- Legal Practice Course (LPC)
- LLM Law and Human Resource Management

School of Social, Historical and Political Studies – Undergraduate Courses

- Armed Forces (BSc) Requires a UK passport min 3 months with Foundation Year option
- Aviation Fire and Rescue (Distance Learning)
- Criminology and Criminal Justice (BA) with Foundation Year / Joint options
- Deaf Studies (BA) with Foundation Year / Joint options
- Fire and Rescue (BSc) with Foundation Year option
- History (BA) with Foundation Year / Joint options
- Interpreting (BSL/English) BA) with Foundation Year option
- Politics (BA) with Foundation Year / Joint options
- Professional Policing (BA) with Foundation Year option
- Social Policy with Foundation Year / Joint options
- Sociology (BA) with Foundation Year / Joint options
- War Studies (BA) with Foundation Year / Joint options

School of Social, Historical and Political Studies – Postgraduate Courses

- Comparative Criminology (MA)
- Military History by Distance Learning (MA)
- Twentieth Century Britain (MA)

Faculty of Education, Health and Wellbeing

Institute of Education – Undergraduate Courses

- Childhood and Family Studies (BA) with Joint options
- Early Childhood Studies (BA)
- Education Studies (BA) with Joint options
- Special Educational Needs, Disability and Inclusion (BA) with Joint options
- Young People, Family and Community (BA)

Institute of Education – Postgraduate Courses

- Education (MA)
- Professional Practice and Lifelong Education (MA)

Institute of Health – Undergraduate Courses

- Health Studies (BSc)
- Public Health (BSc)

Institute of Health – Postgraduate Courses

- Advanced Clinical Practice (MSc)
- Emergency Planning Resilience and Response (MSc)
- Health and Social Care (MSc / MA)
- Health and Wellbeing (Top-up) (MSc / MA)
- Master of Public Health (MPH)
- Master of Public Health by Distance Learning (MPH)

Institute of Human Sciences – Undergraduate Courses

- Psychology (BSc)

Institute of Human Sciences – Postgraduate Courses

- Cyberpsychology (MSc)
- Forensic and Investigative Psychology (MSc)
- Occupational Psychology (MSc)
- Professional Doctorate in Counselling Psychology
- Professional Practice (MSc)

Institute of Community and Society – Undergraduate Courses

- Social Care (BA) with Joint options
- Social Work (BA)

Institute of Community and Society – Postgraduate Courses

- Social Work (MA)

Institute of Human Sciences – Undergraduate Courses

- Football Coaching and Performance (BSc)
- Physical Education and School Sport (BA)
- Sport Business Management (BA)
- Sports Coaching (BSc)
- Sport and Exercise Therapy (BSc)
- Sport and Exercise Science (BSc)

Institute of Human Sciences – Postgraduate Courses

- Sport and Exercise (MRes)
- Strength and conditioning (MSc)

Faculty of Science and Engineering

School of Architecture and Built Environment – Undergraduate Courses

- Architectural Design (HND)
- Architectural Design Technology (BSc) with Foundation Year option
- Architecture (BSc)
- Building Surveying (BSc)
- Civil and Transportation Engineering (BEng) with Foundation Year option
- Civil Engineering (HND, BEng, MEng)
- Construction and the Built Environment (HND)
- Construction Management (BSc) with Foundation Year option
- Environmental Health (BSc)
- Geography, Urban Environments and Climate Change (BSc)
- Infrastructure Engineering and Management (BEng)
- Interior Architecture and Property Development (BSc)
- Property Management and Real Estate (BSc)
- Quantity Surveying (BSc)

School of Architecture and Built Environment – Postgraduate Courses

- Building Information Modelling (PG Certificate)
- Building Information Modelling for Integrated Construction (MSc)
- Civil and Structural Engineering (MSc)
- Civil Engineering Management (MSc)
- Construction Law and Dispute Resolution (MSc)
- Construction Project Management (PG Certificate, MSc)
- Demolition Management (MSc)
- Oil and Gas Management (MSc)
- Programme and Project Management (MSc)

School of Engineering – Undergraduate Courses

- Aerospace Engineering (BEng and MEng) with Foundation Year option
- Automotive Engineering (BEng and MEng)
- Chemical Engineering (BEng) with Foundation Year / Joint options
- Electronics and Communications Engineering (BEng and MEng) with Foundation Year option
- Mechanical Engineering (BEng and MEng) with Foundation Year option
- Mechatronics Engineering (BEng and MEng)
- Motorsport Engineering (BEng or MEng) with Foundation Year option

School of Engineering – Postgraduate Courses

- Additive Layer Manufacturing Technologies (MSc)
- Advanced Technology Management (Manufacturing, Sustainability, Engineering Analysis) (MSc)
- Manufacturing Engineering (MSc)
- Mechanical Engineering with Professional Practice option (MSc)

School of Mathematics and Computer Science – Undergraduate Courses

- Artificial Intelligence and Robotics (BSc) with Foundation Year option
- Computer Networking (BSc) with Foundation Year option
- Computer Science (BSc) with Foundation Year option (Games Development, Software Engineering)
- Computing (BSc) Top-Up (Games Development, Software Development)
- Computer Security (BSc) Top-Up
- Computing and Information Technology (BSc)
- Cybersecurity (BSc)
- Data Science (BSc)
- Mathematics (BSc) with Foundation Year option (Physics, Finance)

School of Mathematics and Computer Science – Postgraduate Courses

- Computer Science with Professional Practice option (MSc)
- Cyber Security with Professional Practice option (MSc)
- Information Technology Management (MSc)
- Mathematics (MSc)

School of Medicine and Clinical Practice – Undergraduate Courses

- Medical Science and Clinical Practice (BSc)

School of Medicine and Clinical Practice – Postgraduate Courses

- Clinical Medicine (Speciality Medicine, Evidence Based Practice, Leadership and Management, Teaching and Learning) (MSc)

School of Pharmacy – Undergraduate Courses

- Pharmaceutical Science (HND, BSc, MSci) with Foundation Year option
- Pharmacology (BSc, MSci)
- Pharmacy (MPharm)

School of Sciences – Undergraduate Courses

- Animal Behaviour and Wildlife Conservation (HND, BSc or MSci)
- Applied Biology (HND)
- Biochemistry (BSc)
- Biological Sciences (BSc) with Foundation Year option
- Biomedical Science (HND, BSc) with Foundation Year option
- Chemistry (HND, BSc) with Foundation Year option (Chemical Engineering / Pharmaceutical)
- Chemical Engineering (BSc) with Foundation Year option (Chemistry / Pharmaceutical)
- Forensic Science (HND, BSc or MSci) with Foundation Year option (Policing)
- Genetics and Molecular Biology (BSc)
- Healthcare Science (BSc) (Physiological Sciences, Cardiac Physiology, Respiratory and Sleep Physiology)
- Medical Physiology and Diagnostics (BSc)
- Physics (BSc) with Foundation Year option

School of Sciences – Postgraduate Courses

- Applied Microbiology and Biotechnology (MSc)
- Biomedical Science (Cellular Pathology, Clinical Biochemistry, Haematology, Medical Microbiology) (MSc)
- Chemistry (MSc)
- Fire Scene Investigation (MSc)
- Forensic Genetics and Human Identification (MSc)
- Forensic Science (MSc)
- Molecular Cell Biology (MSc)
- Wildlife Conservation (MSc)

We offer MPhils and PhDs, for a comprehensive list please visit: wlv.ac.uk/courses



Contact us

Global Opportunities Office
University of Wolverhampton
Wulfruna Street
Wolverhampton
WV1 1LY

Tel: +44 (0)1902 322 474
Email: international@wlv.ac.uk

International Admissions
University of Wolverhampton
MX Building
Wolverhampton
WV1 1SB

Tel: + 44 (0)1902 323 505
Email: internationaladmissions@wlv.ac.uk

For more information, visit: wlv.ac.uk/international

The information in this guide, including the courses offered by the University, is correct at the time of going to print. For the most up-to-date information including a list of programmes currently offered, visit: wlv.ac.uk

