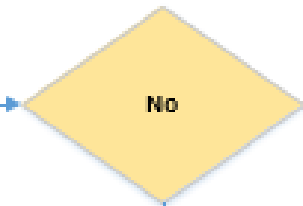
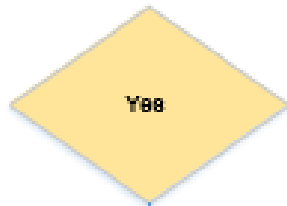




Safeguarding Issue Identified

If an individual is at immediate risk of harm call 999, emergency services

Is the individual a child, apprentice learner or adult at risk?



The University Safeguarding Team must be made aware of the situation as soon as possible, through the safeguarding referral form via the following link:

<https://www.wlv.ac.uk/about-us/corporate-information/safeguarding/>

All referrals will be reviewed by the Safeguarding Team Regularly during office hours

The individual concerned should be provided with the relevant support depending on the Safeguarding Issue identified; details on support and further services provided by the University can be located here:

<https://www.wlv.ac.uk/current-students/student-support/mental-health-and-wellbeing-advice/>

<https://www.wlv.ac.uk/about-us/corporate-information/safeguarding/>

The Safeguarding Team will determine what process to follow depending on the nature of the concern, this will include whether the concern will need to be discussed with any external agencies.

It is important to acknowledge that the individual may require ongoing support following a safeguarding or welfare concern being identified and therefore a support plan with regular review meetings may need to be implemented in addition to any external support that this individual may be receiving.